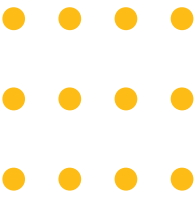




STATEWIDE
STAR PARTY

Solar Eclipse Art INSTRUCTION SHEET

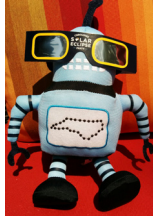


MATERIALS

- 1 sheet of construction paper
- Chalk
- Plastic lid

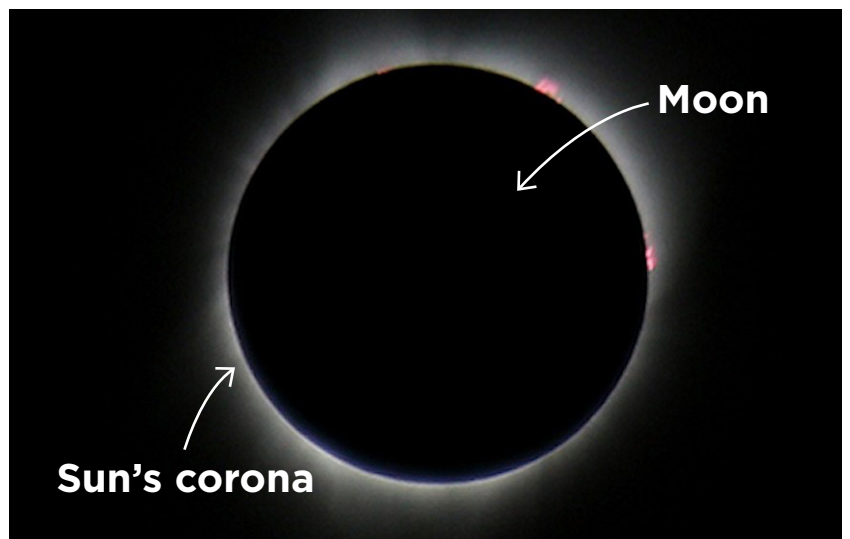
CAUTION!

Never look directly at the Sun. Use special eclipse glasses to view a solar eclipse.



WHAT TO DO

1. Place a plastic lid on top of the construction paper.
2. Hold the lid down with one hand, and use chalk to draw a thick circle around the lid. Your circle does not have to be neat.
3. Still holding the lid in place, use a finger to smudge the chalk away from the circle.
4. Remove the lid to reveal your work of art. This is what a total solar eclipse looks like! For many years, and especially before cameras were available, astronomers have sketched their observations of eclipses.
5. You can use the chalk to add words or pictures to your artwork.



Photograph of a total solar eclipse seen from Madras, Oregon, on August 21, 2017. Credit: Vernon Gross

